

# SILHOUETTE CRUISES



SEYCHELLES



Silhouette Cruises offers weekly cruises through the inner islands of Seychelles and the North-West of Madagascar, visiting some of the world's best beaches and most beautiful islands, while enjoying water sports, sailing, diving and relaxation.

In addition, we can also offer customised whole boat charters of varied length for sailing, diving, ecotourism or fly-fishing (or any combination of activities).

More details and pictures on our web site:

[www.seychelles-cruises.com](http://www.seychelles-cruises.com)



The art of discovering  
the islands...





s.v. Sea Shell



s.v. Sea Pearl



s.v. Sea Star



s.v. Sea Bird



*"The sea, once it casts its spell, holds one in its net of wonder forever."*

*Jacques Cousteau*

To truly experience the Seychelles archipelago is much more than to occupy a space on one of the islands' stunning beaches.

Dozens of different isles, some with towering granite peaks and others comprising pristine coral atolls, offer a surprisingly diverse blend of natural beauty, friendly people and rare flora and fauna. Each island has a character and charm all its own, with colourful individual histories and unique natural features.

For travellers who wish to see as many islands and do as much as possible, while still being able to relax and enjoy the tranquillity of one of the most beautiful places on earth, there may be no better option for a Seychelles holiday than an island-hopping cruise.





Discovering  
the world's most beautiful islands

Silhouette Cruises invites travellers aboard our century-old schooners and our modern yachts, for an unforgettable island-hopping tour encompassing all the best aspects of a Seychelles holiday.



Our itineraries offer a well-rounded mix of activities, from snorkelling and diving to guided island visits and nature walks, while also affording time to enjoy some of the world's best beaches and the gentle sway of the ocean, as we cruise from island to island, anchoring overnight in amazing coves and bays.

We offer 6- or 7-night cruises every week throughout the year with guaranteed departures – perfect for an individual, couple or family wishing to book a cabin to join our scheduled cruises. We also offer whole boat charter options for groups of as many as 18 passengers, for a private and exclusive experience with tailor-made itineraries for diving, eco-tourism or any other combination of activities.

## Authentic Seychellois hospitality at sea

The Silhouette Cruises experience combines the advantages of a smaller, private vessel, with a service level more akin to that of a hotel. Our friendly crews consist of a captain, engineer, 2 deckhands, 2-3 stewardesses (depending on vessel type) as well as a dive instructor and a dedicated chef, who prepares an enticing blend of international fare as well as exotic local Creole cuisine on a daily basis.



# SV Sea Shell



Our traditional Dutch topsail schooners, the SV Sea Shell and SV Sea Pearl, provide a comfortable cruise experience full of atmosphere and rustic charm, to match their unusually checked histories.





The **Sea Shell** was built in 1920 and first used as a pilot vessel to guide foreign ships from Holland and France across the English Channel. During the Second World War she was actually sunk by her owner to prevent it from being used in the conflict. In 1949, she was recovered and re-designed as a fishing boat, and in 1982 she was sold once more and renovated into a sailing school in the English Channel and North Sea, by a Dutch sailor who re-named her Elisabeth Louw after his mother.

The **Sea Pearl** is the oldest vessel in the Silhouette Cruises fleet, having been built in 1915 in Vlaardingen, Netherlands as a sailing-fishing vessel named Dirk. In 1930 she was the last sailing vessel in the Dutch Herring fleet. After decades of fishing the North Sea she was redesigned in 1991 into a schooner rigged sailing ship, cruising the Caribbean Islands and Canada under the name Regina Chatarina.

Now operating in Seychelles, these 36-metre vessels have been completely refurbished with modern amenities, while still retaining their early 1900s character with beautifully restored wooden finishings. The vessels comfortably accommodate up to 16 passengers, across 8 fully air-conditioned cabins, each with their own wash basin. An air-conditioned salon, covered back deck lounge, sun deck and bow-net hammocks provide ample space onboard for relaxation and to enjoy the constantly changing scenery during the course of a week's cruise.





sy Sea Bird  
5





For a more modern and comfortable experience, our custom-built yachts **SY Sea Star** and **SY Sea Bird** offer the same exciting island-hopping concept, but with more spacious accommodation and refined amenities.

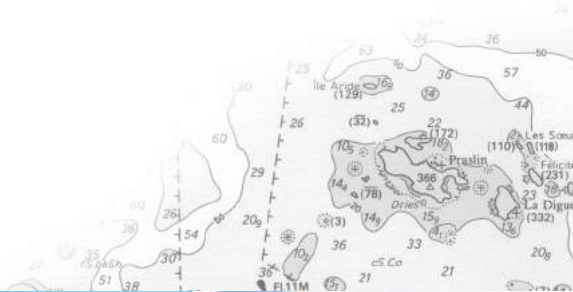
These 40-metre yachts can accommodate 18 passengers in 9 spacious and air-conditioned double-bed cabins, each with en-suite bathroom. Some cabins also feature an extra single bed for triple occupancy requests.

A stylish air-conditioned bar & lounge offers an inviting atmosphere to relax or enjoy an evening aperitif, while its adjacent dining salon is the stage for any number of Creole and international delights from our chef, with three-course dinner services or buffet meals served throughout the week. *Al fresco* dining can also be offered on the covered back deck and lounge area.

The forward sun decks and large deck area at the bow provide a great deal of open space to sunbathe and unwind, and the rear platform allows easy access to the water for swimming and snorkelling. This special closeness to the sea, paired with roomy cabins and a unique style of service, make **Sea Star** and **Sea Bird** an ideal choice for island-hopping in the Seychelles.



SY Sea Star



# Activities



## Diving

Diving and snorkelling in the Seychelles reveal the best of the magical underwater world that the Indian Ocean has to offer. Unique granite boulder formations, coral reefs and wrecks are home to colourful tropical fish, turtles, sharks, rays and many other species.

Some of the best dive sites in Seychelles' inner islands are easily accessible on our cruises. Each vessel has a dedicated PADI dive instructor onboard to accommodate the needs of both seasoned and novice divers alike. Introductory dives for first-timers, and even Open Water or Advanced diving courses can be conducted onboard.

All vessels are equipped with two dive compressors, 18 cylinders and refills, weights, assorted wet suits (shorties) and 8 full diving sets for hire.



## Island Hopping

Each day onboard presents a new opportunity to explore isolated bays and coves, colourful marine parks, and protected nature reserves or uninhabited islands. Spotting the incredibly rare Magpie Robin and other endemic birds, visiting the UNESCO World Heritage Site of Vallée de Mai, or getting up close and personal



with a giant tortoise, are just a few of the many special experiences that await on the islands we visit.

## Water sports

All of our vessels are equipped with a variety of watersports facilities, including kayaking, water-skiing, ring riding and snorkelling masks and fins. We also offer the opportunity to enjoy traditional bottom-line fishing in certain areas, with our chef ready to prepare fresh Seychelles-style sashimi or grilled fish in the event of a successful catch.



## Sailing

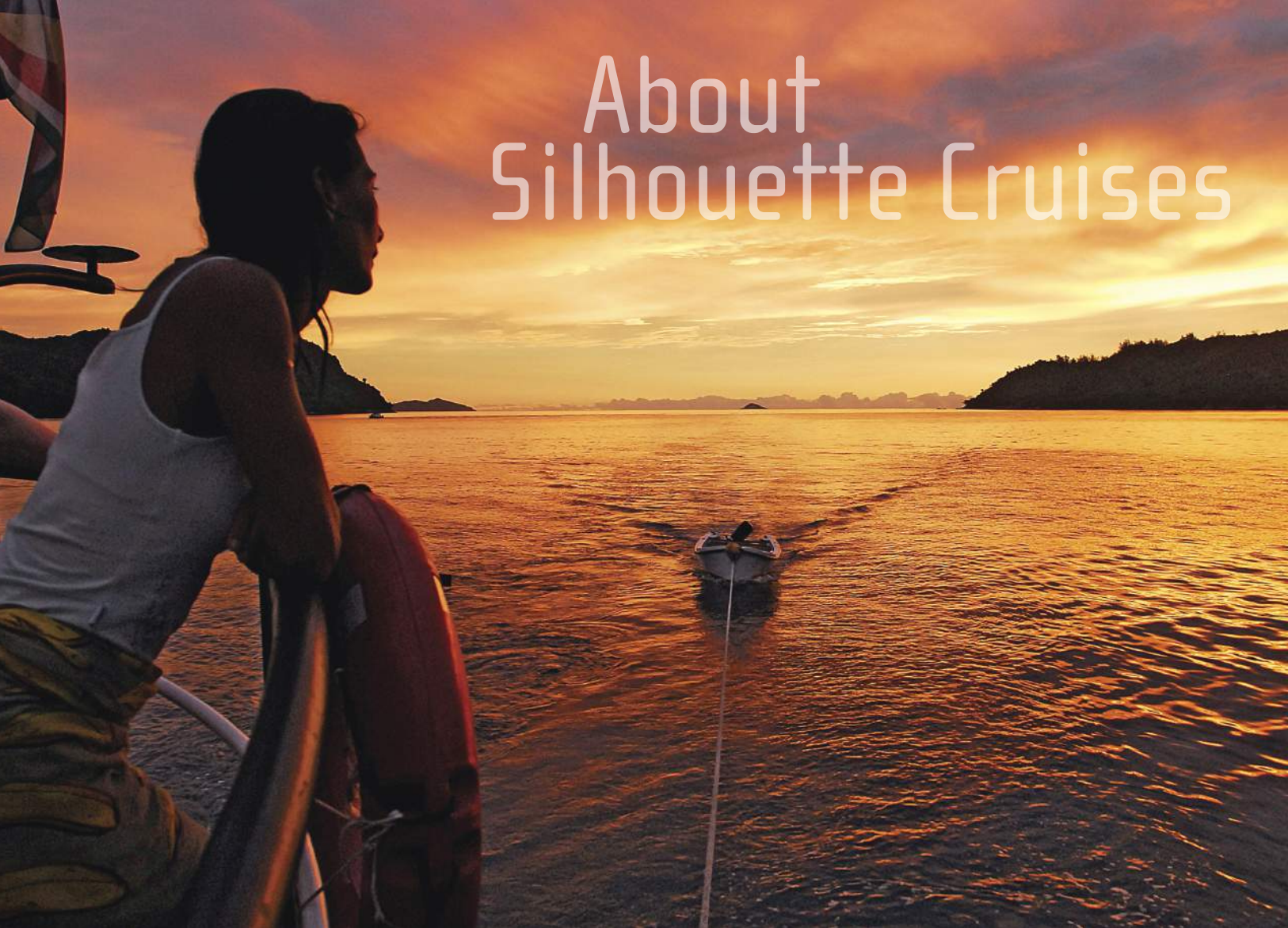
For sailing enthusiasts the **Sea Shell** and **Sea Pearl** offer the opportunity to sail on traditionally rigged Dutch topsail schooners, whereas **Sea Star** and **Sea Bird** feature a modern furling system.

## Special themed programmes

A number of special niche programmes have been developed to cater for those seeking a more specific experience in Seychelles. Our vessels provide the perfect platform to move quickly and conveniently between isles while concentrating on a particular activity or interest – we've designed programmes for sea kayaking, bird-watching, cycling, snorkelling with whale sharks and more. Contact us and we can customise a cruise tailored to almost any special interest.



# About Silhouette Cruises



Silhouette Cruises is a joint venture between Seychelles and international interests founded in 1997 with a vision to introduce a new tourism concept. This combines the romance of sail with the charm of the world's ultimate tropical islands: Seychelles.

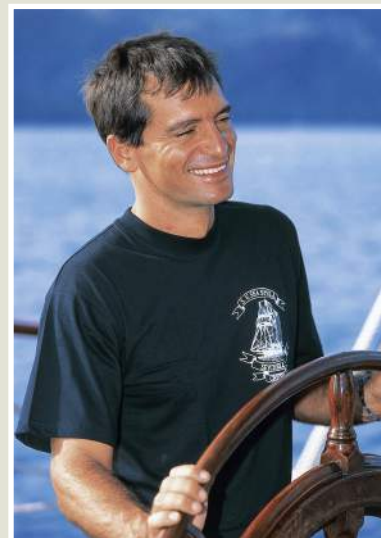
The successful introduction of SV Sea Shell was followed by the arrival of a sister ship, SV Sea Pearl, in 1999. With a desire to introduce the same concept onboard a more comfortable platform, SY Sea Star began operating in 2004, followed by SY Sea Bird in 2007.

The company has recently expanded even further with the addition of a new expedition vessel, the MV Maya's Dugong, which undertakes a variety of oceanographic research and monitoring missions, and is also available for select expeditions for tourists.

The directors of Silhouette Cruises are among the very few people to have visited every single island in Seychelles.

Executive Director *Amit Wasserberg* (photo) knows the islands intimately, having captained live-aboard vessels in the region for more than 10 years. Chairman *Adrian Skerrett* has authored many books on Seychelles and its natural history, and is a trustee of several conservation organisations. Director *Guy Adam* has spent a lifetime involved with a variety of vessels in the region, both serving at sea and ashore.

Today, Silhouette Cruises has established a strong base in the Indian Ocean with years of experience in successfully operating cruises for tourists. We are committed to build upon this success and provide high standards of service, while operating in a responsible and sustainable manner in co-existence with the natural eco-systems we visit.





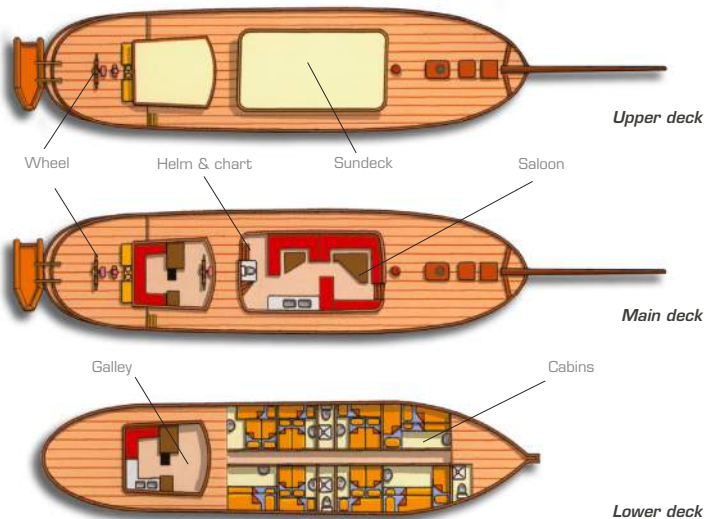
## sv. Sea Shell, Two-masts topsails schooner

DESIGNER	Van Meer	FISH FINDER	Lawrence AX28
SHIPYARD	Vige, Holland	GPS	Valsat
BUILT	1920 - Riveted steel	NAVETEX	JRC
SAIL AREA	ca. 520 sqm	RADAR	Furuno 701
DIMENSIONS	36.17 x 6.58 x 2.90 m	TENDER BOAT	Mini Mahé 6 m - 50 hp
DRAFT	2.90 m	ELECTRICITY	380 V, 220 V, 24 V
DISPLACEMENT	160.110 tons	<b>Communications</b>	
MAIN ENGINE	Henschel 300 hp	VHF Sailor 244	2 x VHF Mob
SPEED ON ENGINE	7 knots	Radio telephone	Furuno
ECHO SOUNDER	Space Age Electric	Cellular phone	(00248) 514 051



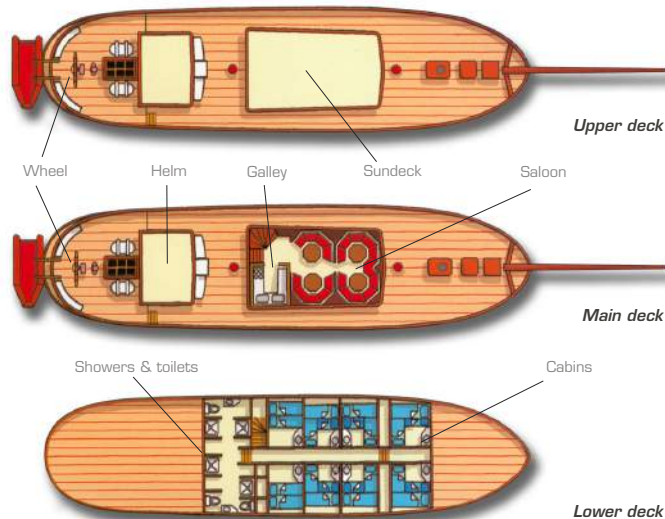
## sv. Sea Pearl, Two-masts topsails schooner

BUILT	1915 - Riveted steel	GPS	Valsat
RE-BUILT	1992, 1999	NAVETEX	JMC-NT-9000
SAIL AREA	ca. 520 sqm	RADAR	Furuno FR-711N
DIMENSIONS	36.17 x 6.6 x 2.75 m	TENDER BOAT	Mini Mahé 6 m - 50 hp
DRAFT	2.75 m	ELECTRICITY	380 V, 220 V, 24 V
DISPLACEMENT	155 tons	<b>Communications</b>	
MAIN ENGINE	Cummins MPC 300 hp	VHF Sailor RT 2048	2 x VHF Mob
SPEED ON ENGINE	7 knots	Radio telephone	Sailor SSB Re2100
ECHO SOUNDER	Standard Horizon	Fax - E-mail	Immarsat-C TNL 7001
FISH FINDER	Lawrence AX28	Cellular phone	(00248) 514 051



**Accommodation:** Fully air-conditioned cabins with wash-basin. 5 Double bed cabins + 1 bunk. 1 Single bed cabin with 2 bunks. 2 Single bed cabins with 3 bunks • 3 showers – 4 toilets – 1 deck shower • TV, DVD, video, stereo, ice machine, washing machine, dryer • 2 double-seater canoes • Snorkelling equipment, water ski, tube ride, windsurfing, fishing equipment.

**Crew:** 1 Captain • 1 Chef • 1 Mechanic • 2 Stewardesses • 1 Dive instructor • 2 Deckhands



**Accommodation:** Fully air-conditioned cabins with wash-basin. 2 Double bed cabins + 1 bunk. 4 Double bed cabin + 2 bunks. 2 Single bed cabin + 3 bunks • 3 showers – 4 toilets – 1 deck shower • TV, DVD, video, stereo, ice machine, washing machine, dryer • 2 double-seater canoes • Snorkelling equipment, water ski, tube ride, windsurfing, fishing equipment.

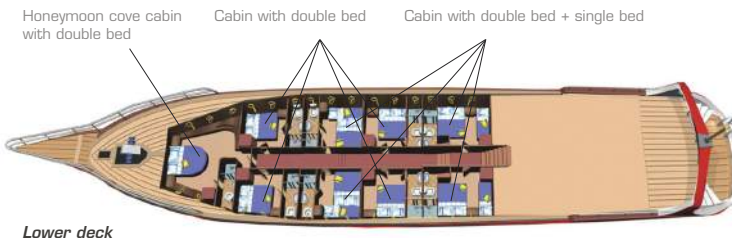
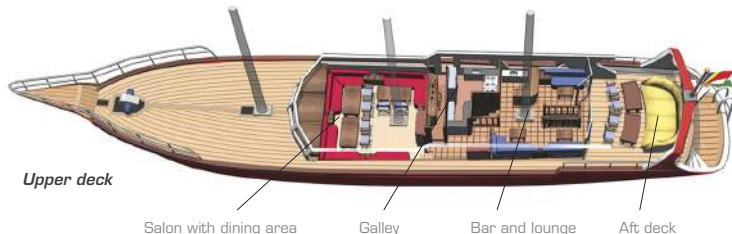
**Crew:** 1 Captain • 1 Chef • 1 Mechanic • 2 Stewardesses • 1 Dive instructor • 2 Deckhands





## s.y. Sea Star, Three-masts modern custom-built schooner

BUILT	2002, welded steel	RADAR	JRC
SAIL AREA	500m <sup>2</sup>	TENDER BOAT	Shakespeare
LENGTH	40 m		5.6m + 75hp
DRAFT	2.40 m	ELECTRICITY	380v, 220v, 24v DC
BEAM	8.2 m		
DISPLACEMENT	200 tons	<b>Communications</b>	
MAIN ENGINE	2 x 500 HP Iveco	VHF	ICOM
SPEED ON ENGINE	9 knots	Radio telephone	2 x VHF Mob
ECHO SOUNDER	Si-Tex	Cellular phone	Furuno
FISH FINDER	Si-Tex	Satellite communication	(248) 514 051
GPS	Si-Tex		



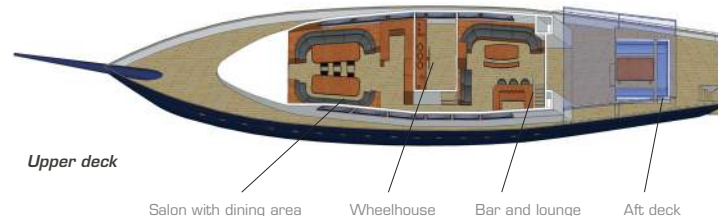
**Accommodation:** Fully air-conditioned cabins with en-suite shower and toilet. 4 Double bed cabins + 1 bunk. 4 Double bed cabins. 1 Honeymoon suite • 2 deck showers • TV, DVD, video, stereo, ice machine, washing machine, dryer • Teak deck • 2 double-seater canoes • Snorkelling equipment, water ski, tube ride, windsurfing, fishing equipment.

**Crew:** 1 Captain • 1 Chef • 1 Mechanic • 3 Stewardesses • 1 Dive instructor • 2 Deckhands



## s.y. Sea Bird, Two-masts, custom-built schooner

BUILT	2000, welded steel	RADAR	JRC
SAIL AREA	500m <sup>2</sup>	TENDER BOAT	Mini-Mahé
LENGTH	42 m		5.6m + 55hp
DRAFT	3.20 m	ELECTRICITY	380v, 220v, 24v DC
BEAM	8.5 m		
DISPLACEMENT	200 tons	<b>Communications</b>	
MAIN ENGINE	2 x 575 HP Caterpillar	VHF	ICOM
SPEED ON ENGINE	9 knots	Radio telephone	2 x VHF Mob
ECHO SOUNDER	JRC	Cellular phone	Furuno
FISH FINDER	JRC	Satellite communication	(248) 514 051
GPS	JRC		



**Accommodation:** Fully air-conditioned cabins with en-suite shower and toilet. 3 x cabins with double bed. 6 x cabins with double bed + single bed • 2 deck showers • TV, DVD, video, stereo, ice machine, washing machine, dryer • Teak deck • 2 double-seater canoes • Snorkelling equipment, water ski, tube ride, windsurfing, fishing equipment.

**Crew:** 1 Captain • 1 Chef • 1 Mechanic • 3 Stewardesses • 1 Dive instructor • 2 Deckhands



H414



*"An unforgettable experience!"*

*"Une expérience inoubliable!"*

*"Eine unvergessliche Erfahrung!"*

*"Un'esperienza indimenticabile!"*

[www.seychelles-cruises.com](http://www.seychelles-cruises.com)