

Pacific Ocean itineraries: Truk Lagoon (7 nights)

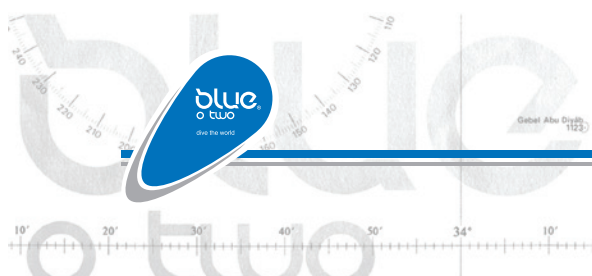
After WWI, Japan was given control of Truk (Chuuk) and fortified the lagoon into becoming one of their largest naval bases. It was from here that the Japanese fleet launched their attack on the US' Pearl Harbor in 1941. The ensuing retaliation of "Operation Hailstorm" in 1944 resulted in the loss of 61 ships, mostly "Maru" or merchant vessels which had been left at anchor whilst some 200 other vessels were safely evacuated to Palau.

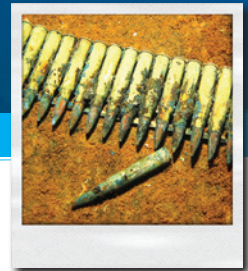
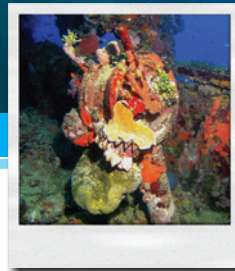
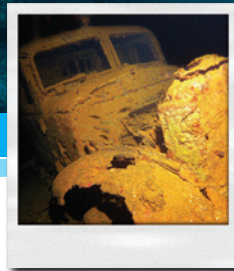
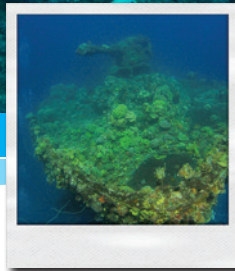
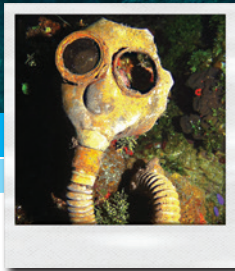
The result has been a collection of shipwrecks of closely packed into a coral lagoon, many of which are with easy reach of recreational divers. Over the course of the itinerary you will explore many of these wreckages along with reef dives in the inner lagoon.

Qualifications needed:

We recommend being qualified as **PADI Open water** and no minimum number of logged dives are required.

The majority of shipwrecks within Truk Lagoon are deemed suitable for recreational divers and offer varying depths for multi-level profiles. Some sites do however lie beyond or have interesting features deeper than the recognised recreational diving depth limit of 40m (130ft) and are therefore more suited to divers with deep diver or technical diving qualifications.





Diving highlights:

The following is a sample itinerary of where you may dive during your holiday with the Siren Fleet. We wish to show you the very best diving but a number of factors can determine where we visit. Weather, tides, visibility and how busy a site is with other vessels, all play a part in the Cruise Director's decision of which dives will be made on any given day. The Cruise Director is happy to listen to and respect requests from guests to visit or remain at certain sites, providing it is possible and the schedule allows.

Fujikawa Maru: A signature dive of Truk Lagoon, this 132m (436ft) armed cargo ship sits perfectly upright on the sandy bottom at a depth of 34m (120ft) whilst the forward king post reaches up to 5m(15ft). The "Fuji" offers 6 holds, 4 of which are open, in which can be found parts of Zero Fighter Aircraft from engine parts, propeller blades and fuel cells. Deeper inside the wreckage Mitsubishi A5m Claude & A6M parts can be discovered. The bow gun is encrusted with corals and the outer wreckage supports sea fans, soft corals & anemones. Diving the "Fuji" is suitable for divers of all levels however deeper penetration into the engine room will only be permitted to certified tec / wreck divers.

Fumitsuki: A 97m (300ft) long Japanese Destroyer. She sits upright in 38m (130ft) of water rising up to 21m (75ft). Covered in marine life she is a pleasure to dive.

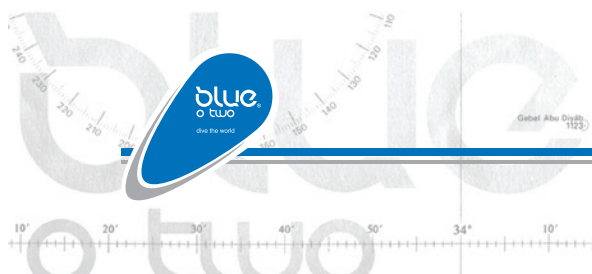
Submarine 1.169: Quickly submerging during the attack to avoid damage, the submarine unfortunately failed to close her valves, allowing for water to enter and as she descended she came to rest on her port side at a depth of 38m (140ft).

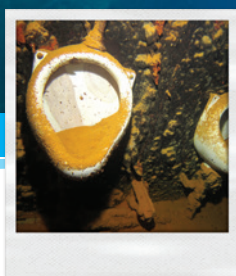
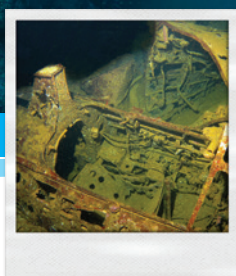
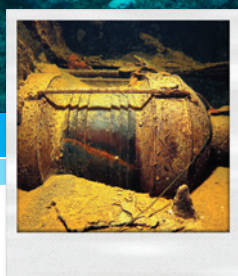
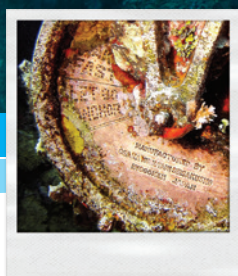
Yamigari Maru: Resting on her port side, though almost completely intact despite repeated bombings, the Yamigari freighter still contains many artillery shells and ammunition.

Shinkoku Maru: A large oil tanker, now rests upright on the bottom encrusted with corals, sponges & hydroids. From the bridge you can see into the engine room whilst the galley still holds many utensils on the large stove. Small guns, mounted fore and aft are also covered with corals making this one of the most colourful and spectacular wrecks to be found in Truk.

Nippo Maru: At a depth of 50m (160ft) the Nippo is an intriguing dive site best suited to tec divers. The holds contain antitank guns and 5inch guns, mines and a tank, whilst the bridge, helm and superstructure have attracted a plethora of silver sweepers.

Heian Maru: The largest ship in the lagoon, the Heian, originally used as a cargo ship, is 165m (510ft) in length and lies on her port side in 34m (150ft) of water. Within her holds diver may find torpedoes, shells and even the occasional periscope.





Diving highlights continued:

Susuki Destroyer: Best known for its engine room, this patrol boat once boasted an array of gas masks and other fascinating artifacts, many of which have since been removed. However some can still be found scattered about the deck and it remains a stunning wreck dive site. The bow is in just 3m (10ft) of water, shallow enough to see whilst snorkelling, with the stern propeller at 15m (50ft).

San Francisco Maru: The passenger & cargo ship, weighing 5,831 tons, lays upright at a depth of 63m (195ft). Here divers can see the remains of many well preserved war-relics including three large tanks which rest on the deck at between 46-55m (150-175ft).

Hoki Maru: This 30m (100ft) long freighter lies upright from 53m (160ft) and is only partially intact. The aft hold carries trucks and road supplies whilst sake bottles can be found here too. The superstructure is awe-inspiring and covered with brightly coloured sponges.

Gosei Maru: A submarine tender carrying torpedoes starts in just 3m (10ft) and drops to 33m (120ft) within which can be found many personal artifacts, serving as a reminder of those who lost their lives during the battle.

Rio de Janeiro Maru: 140m (430ft) long she lays on her port side in 34m (120ft). Once a luxury passenger vessel she was converted to a cargo vessel in wartime. Exploration of her holds turns up a range of supplies from beer bottles to guns. The upper deck reaches to an easily diveable depth of 10m (30ft).

Betty Bomber: A long-range aircraft lies on the seabed at 20m (80ft) and is surrounded by schooling fish.

Shark Island: Possibly the most famous reef dive in Truk, is a fantastic cleaning station for reef sharks and at just 18m (60ft) is perfect for some "off-gassing" in the afternoon after a morning of wreck diving.

