



Manta maria

DIVE CENTER | AZORES



Our diving center is located in the middle of the Atlantic Ocean, on the Island of Santa Maria , the furthest southeastern Island of the azorean archipelago.

This location offers ideal conditions for diving, not only because of it's fantastic water visibility (up to 40 meters) and temperatures (22-24°C), but also because of its strategic location at the doorstep of the Natural Reserves of Formigas and Dollabarat Bank and "AMPs" – Protected Marine Areas as the "Baixas" of Ambrósio, Pedrinha and Maia considered by many as the best diving locations in Europe.

2 hours from Lisbon!



Boats

Manta -----	7,10m, semi-rigid,	1x SUZUKI	200CV,	14 Persons
Badejo -----	8,50m, semi-rigid,	1x SUZUKI	300CV,	20 Persons
Birostris -----	8,50m, semi-rigid,	1x SUZUKI	300CV,	20 Persons
Ratão -----	7,50m, semi-rigid,	1x SUZUKI	225CV,	20 Persons
Rilusa -----	7,10m, fibreglass,	VOLVO PENTA	150CV,	8 Persons

B-Trox Filling Station

This modern **BAUER PURE AIR** certified filling station offers complete safety of operation and an exceptional air quality with up to 40% oxygen enriched air (Nitrox).

Bauer Portable PE300 Poseidon Edition

Diving Equipment

15, 12,7, 6 and 3 liters steel tanks; complete diving seas equipments; oxygen emergency kits.

Rebreather friendly conditions

Oxygen, Helium and Trimix available; Booster pump for O₂ and He; Consumables and equipments; 3.7 liters bail-outs; Various transfer material; O₂ Analyzer.



Bauer Pure Air



Bauer Portable PE300 Poseidon Edition







Ratão



Badejo



Birostris



Birostris



Badejo



Manta







What We Offer



In addition to the guided dives, we offer **Padi**, **SSI**, **CMAS** and **DDI** training and we are also a TDI “Rebreather Friendly” – Poseidon MKVI Discovery Dive Center.

Since 2018 we are also honored by being the first Dive Center being part of the **Program Blue Flag**, having the pleasure to use this flag on one of our Boats.

*We are able to guide and form handicapped divers in safety and make their certification.



Diving Center Area – MantaMaria









Santa Maria Island

There is a number of different types of dives around the Island of Santa Maria. This is due to the diverse geological formations of the Azorean archipelago – caves, tunnels and sand bottoms on the coast, small islets close to the coast or submarine mounts in the open sea.

Worth mentioning is the “**Baixa do Ambrósio**” where a yearly concentration of mant rays, which is unique in the world, occurs in the summer – a sure bet.

Natural Reserve of Formigas and Dollabarat

Considered by many as the best dive site in Europe, this reserve lies in the open sea, 20 miles northeast of the Island of Santa Maria. A vast number of marine species can be observed here – this is a place where the largest number of pelagic species can be frequently observed.



The marine diversity is the star of the show and the basis for our excellence in the practice of the diving activity.

All photos above were taken by our clients. **Thank You!**





A small islet located less than 500 meters from the coast, in front of the village of Maia.

It is classified as an "AMP" - protected marine area, where it is strictly forbidden to fish in an distance area of 300 meters around the shoal, due to the importance of the place for the diving activity. The area is often subject to moderate to strong currents. However, this is the perfect spot for encounters with schools of pelagic fish patrolling the waters around the rock - large schools of barracudas, amber jacks and crevalle jacks are not uncommon.



This submerged shoal is located about 50 metres from the east shore of Santa Maria, with the top at just 3 metres deep and a maximum depth of 32 metres. The spot is very convenient for snorkeling as well.

At the top of the shoal it is possible to observe a multitude of small colourful fish, such as the ornate wrasses, but also octopuses and moray eels; the recesses of the rocky seafloor shelter some barnacles, the empty shells often occupied by lazy gobies.

At a depth of 15 metres we come across an oval cave, featuring some sponges of various colours. Further down we reach a crack, near the bottom, where it is not unusual to spot a large dusky grouper and a school of crevalle jacks, as well as a few branches of black coral and small schools of colourful swallowtail seaperches.



One of the most popular dive sites of the Azores, the "AMP" - Protected Marine Area of Baixa do Ambrósio shows an incredibly diverse and abundant marine life, as it is usually only found in the remote seamounts, away from the coast.

Only 3 miles away from the north coast of Santa Maria, “Ambrósio” became famous for the often huge groups of manta rays that hover peculiarly around the divers, in the summer months.

It is a deep dive, often subject to moderate to strong currents; it is nevertheless accessible to less experienced divers and even suitable for snorkeling. Most divers choose to hang to the anchor cable, between 5 and 15 meters, since most of the local fauna can be seen also at shallow depths.

However, for the most experienced buccaneers, it is possible to explore the bottom, about 46 meters deep. It is formed by a small platform of 50 meters of length, also rich in life: pelagic menus, pieces of impressive size lemon, anchovies and fish pieces.

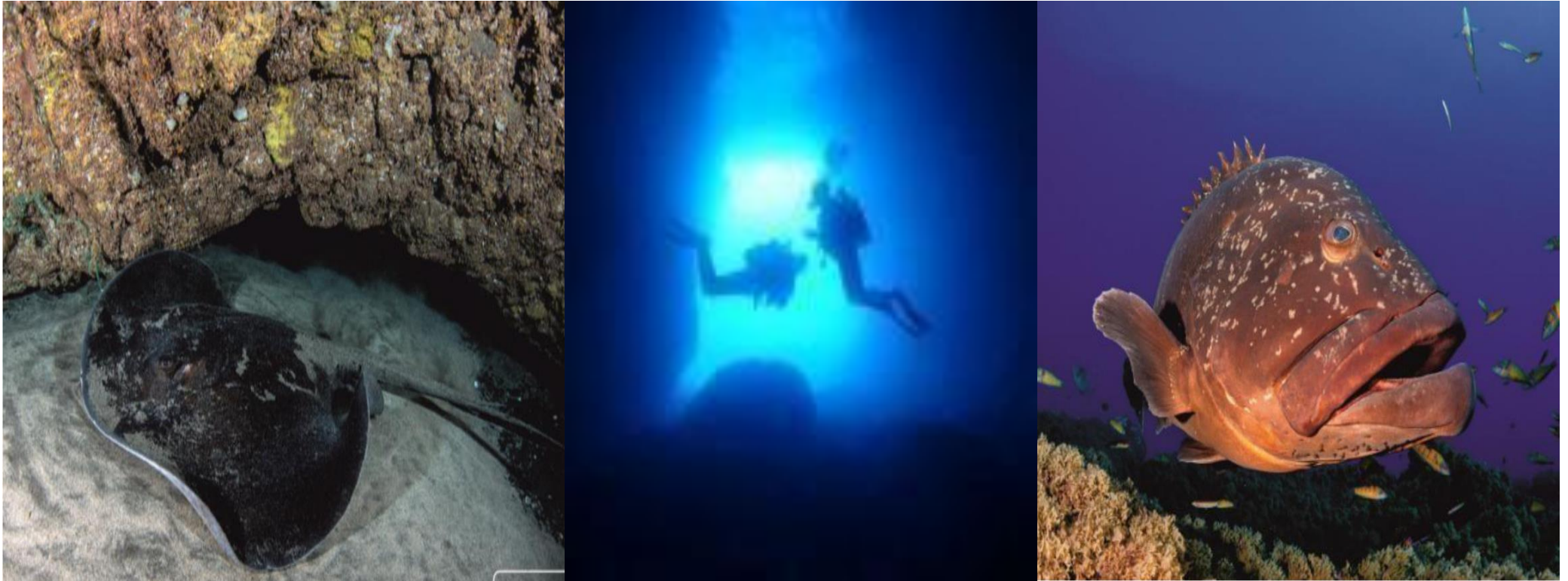


Located on the northwest coast of the island of Santa Maria, João Lopes bank consists of an underwater peak with the top at a depth of 14 meters and the base at around 40 meters.

Since it lies relatively far from the coast, it is sometimes subject to moderate to strong currents. These currents, coupled with the considerable depths in the vicinity, make the place suitable for more experienced divers.

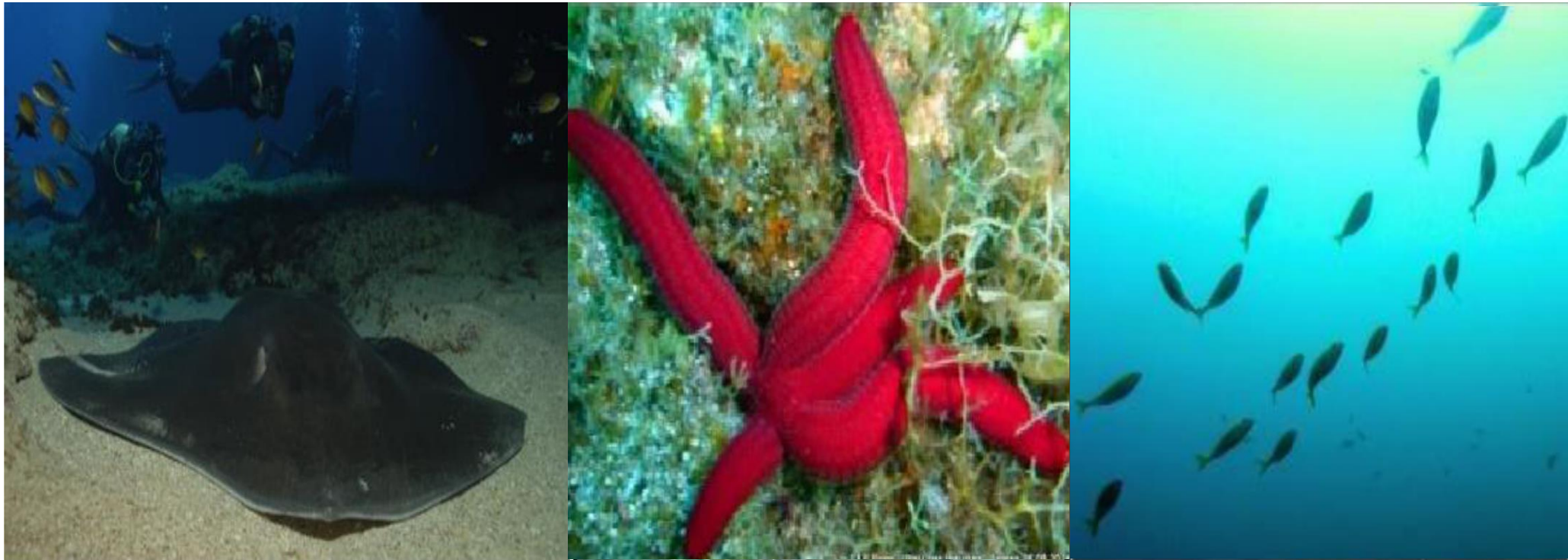
At the top of the mount we have the typical fauna of the islands, such as rainbow wrasses, ornate wrasses, schools of salema porgies and the curious blacktail combers. The rock features steep slopes and vertical walls, along with some platforms at a depth of 20 meters, providing the perfect environment for pelagic fish such as amber jacks, yellowmouth barracudas and large dusky groupers.

Near the bottom, dusky groupers and comb groupers swim along the walls, together with groups of manta rays hovering around.



This small islet, called Ilhéu da Vila for its closeness to Vila do Porto, is about 50 meters high and 200 meters distant from the island's southwest coast. Despite being close to the Marina as well, the site calls for a fairly abundant marine life. The islet is an integrant part of the Natural Park of Santa Maria Island and also an "AMP" - Protected Marine Area.

The north face of the islet is more prone to the appearance of schools of pelagic fish, such as amber jacks, yellowmouth barracudas and crevalle jacks. On the south side we can find a small cave, around 12 meters long, where several species of nudibranchs and crustaceans, such as the narwhal shrimp, find shelter.

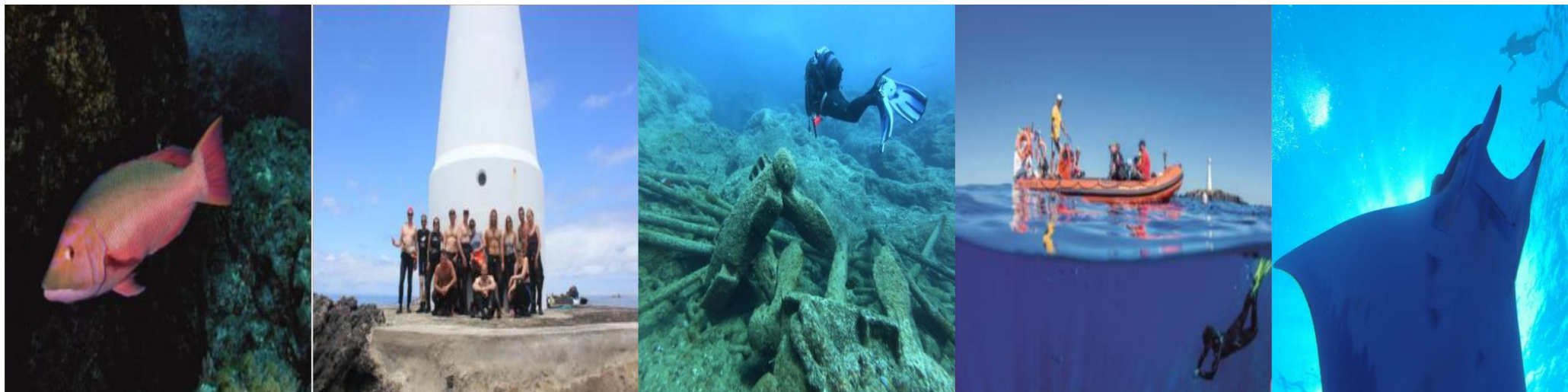


Lagoinhas Islet lies on the northeast coast of Santa Maria island, about 9 nautical miles from Vila do Porto's Marina.

Around the islet, a number of peaks rise from the sea bottom, at a depth of 22 meters, to near the surface - the shallowest, on the north range, comes up to only five meters deep.

At the top of the mounts there is a large number of fish species, like ornate wrasses, Atlantic damselfish, moray eels and grey triggerfish.

As the depth increases, we can spot some dusky groupers, barred hogfish and even small groups of manta rays hovering around the islet.



This group is reached at the end of a 20 mile boat ride from Santa Maria, during which, with a little luck, you will be able to spot some whales, turtles and marine birds. The remote locations of Formigas and Dollabarat, together with the possibility to observe the multiple species that swarm the islands' seas, turn this place into one of the best dive spots in the Azores. Diving here is recommended only for experienced divers, since the location is very far from any harbour and currents can sometimes be rather strong. Once on the spot, the choice is multiple: you can visit the Olympia wreck, southwest of the rocks, between 30 and 50 meters deep, or you can explore a small shoal 8 meters deep and 50 meters south of the lighthouse, or dive the walls on the east side of the biggest islet, or swim around the rock boulders on the north side. Southeast of Formigas lies the Dollabarat Bank, so close that some divers take the opportunity to dive at both places, considered as a marine reserve and where fishing is strictly forbidden. Dollabarat presents a shallow area, at about 5 metres deep, interspersed by several ravines at 8-10 metres. This sort of platform drops steeply to 20-30 meters - the vertical walls testify of the place's abundant biodiversity.

The Formigas-Dollabarat set can well be considered the best dive spot of the Azores. Just pay attention to the water column and look out for the large pelagic species, including skipjack tunas, big-eye tunas, wahoos, large Atlantic bonitos, yellowmouth barracudas and crevalle jacks. If you are fortunate enough, you can spot sharks including the mythical smooth hammerhead and the Galapagos shark, along with devil rays and even huge mantas.

In conjunction with the Ilhéu das Formigas, can be considered one of the best dives in the Azores, where we observe its crystal clear waters a huge variety of species, like large dusky groupers, island groupers and barred hogfish, as well as rarer species such as devil rays.



Pedrinha lies less than one mile from the coast, just facing Praia Formosa, on the south side of the island. It is an "AMP" - Protected Marine Area, being an excellent location for night diving and snorkeling.

With its top at about 4 meters from the surface and a large platform full of schools of small fish between 8 and 12 meters deep, the shoal drops then to 30 meters deep (even 40, on the south slope), providing an excellent dive for beginners and more experienced divers as well.

This dive can still present us with three different caves and a wide crack that rises up from 17 meters deep to the top of the reef. As depth increases, and in particular around the deepest cave, full of colorful swallowtail seaperches, you may find large dusky groupers, barred hogfish, schools of pelagic species and even manta rays.

Offer other activities in land and water, combining the nature, adventure and the discovery of heritage and local culture:

- ✓ Sunset;
- ✓ Boat Tours;
- ✓ The Fossil Route;
- ✓ Trips around the Island on land;
- ✓ Tradional Tuna Fishing;
- ✓ Visist the museums of Santa Maria;
- ✓ Visits to “Centro de Interpretação Dalberto Pombo”;
- ✓ Visits to the Library of Vila do Porto;
- ✓ Visits the LightHouse Gonçalo Velho.





The landscape contrasts are one of its greatest charms. The coast is ragged, forming bays and small coves or inlets resulting in pleasant and welcoming beaches, with the particularity of being the only light coloured sandy beaches in the Azores. Great contributors to the richness of Santa Maria's Natural Patrimony are its geological and geomorphologic aspects. Santa Maria is the only island in the Azores that holds deposits of marine fossils.

All the richness and diversity of the island of Santa Maria is made-up of many singularities. Go forth and discover them, you will be pleasantly surprised!



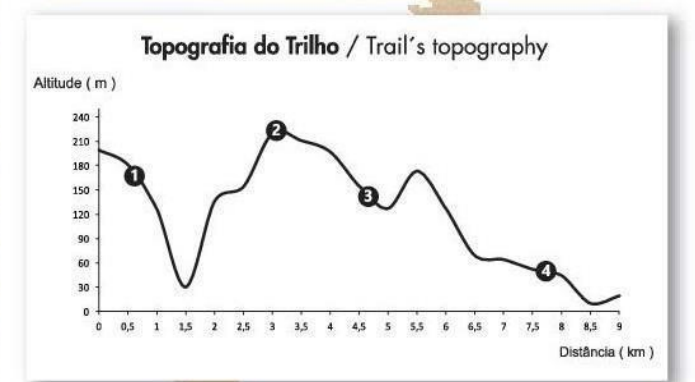
PR 01 SMA Percurso Pedestre / Walking Trail
Costa Norte
 Ilha de Santa Maria / Santa Maria island



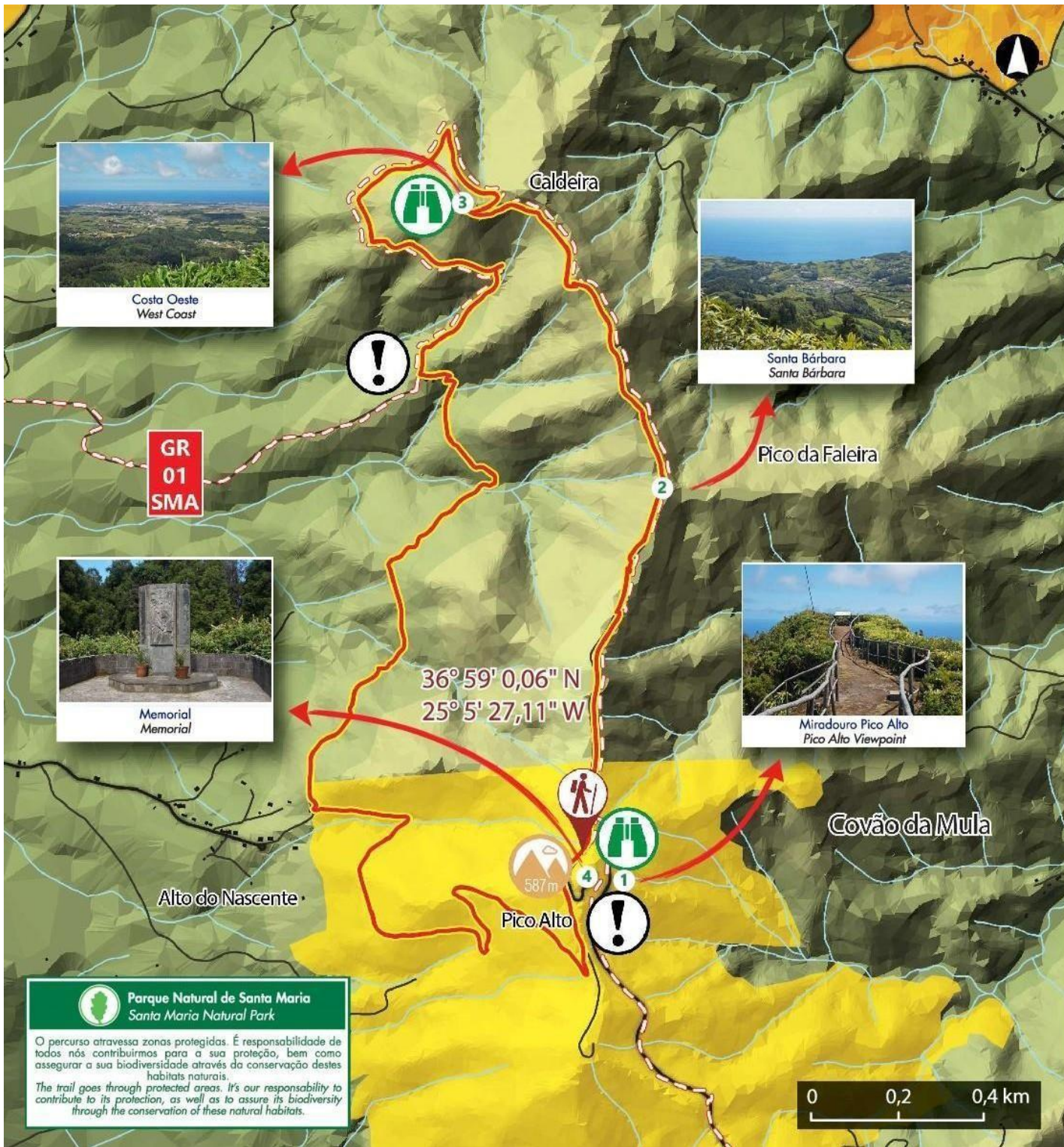
Duração Duration **04h00** **Extensão** Length **9 km**

Fácil Easy **Médio** Medium **Difícil** Hard

Caminho certo Right way **Caminho errado** Wrong way **Vire à direita** Turn right **Vire à esquerda** Turn left



Bicicletas Bicycles **Motorizados** Motorized **Equestres** Equestrian **Equipamento** Equipment **Familiar** Family **Ondulado** Wavy trail



PRC
02
SMA

Percurso Pedestre / Walking Trail

Pico Alto

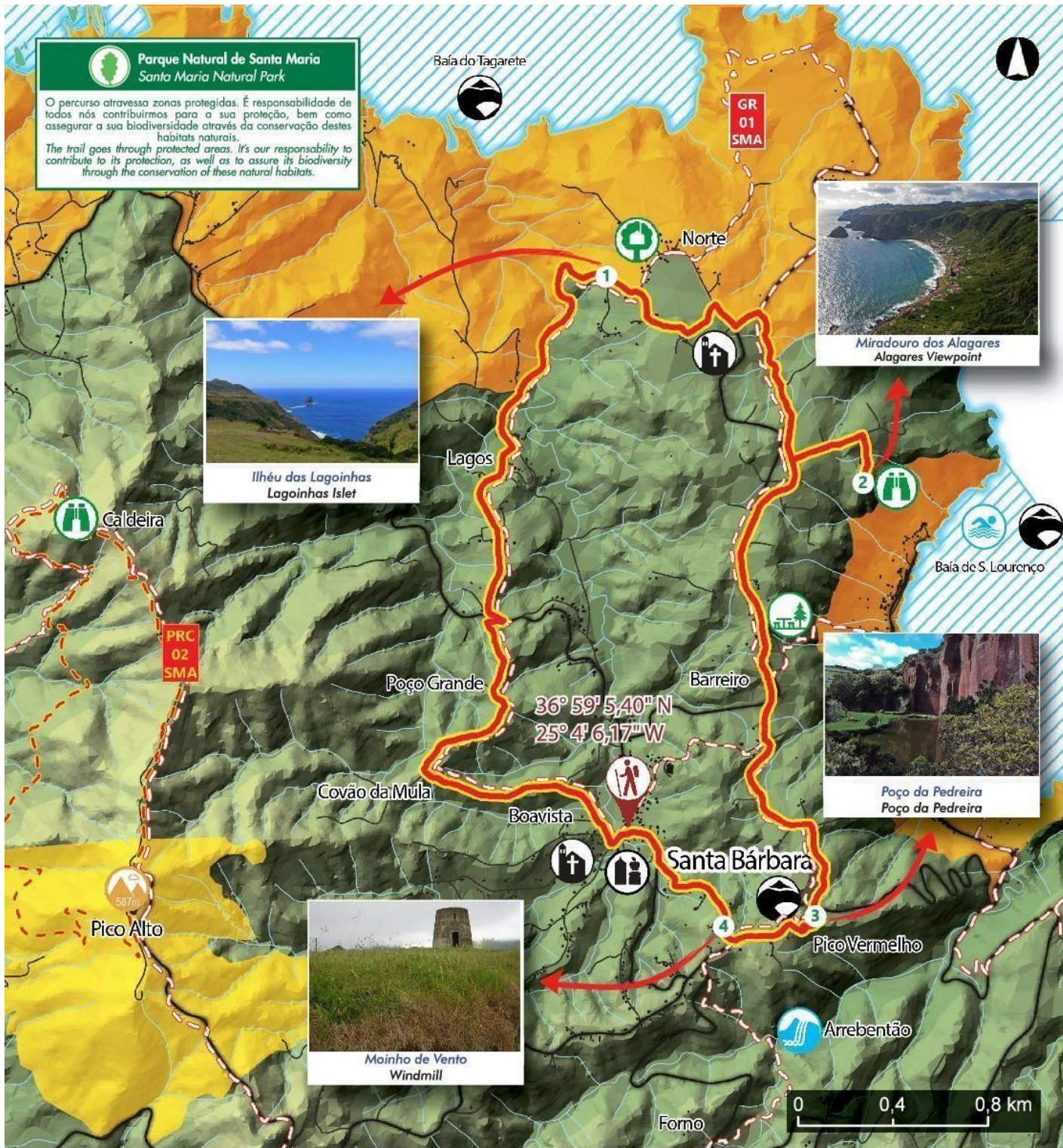
Ilha de Santa Maria / Santa Maria island



Duração Duration	02h00	Extensão Length	6,2 km
Fácil Easy	Médio Medium	Difícil Hard	
Caminho certo Right way	Caminho errado Wrong way	Vire à direita Turn right	Vire à esquerda Turn left



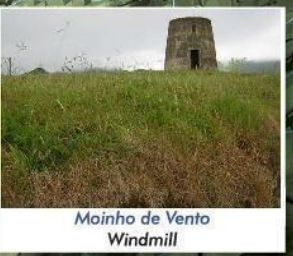
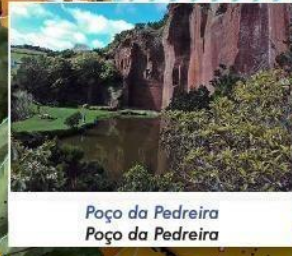
Bicicletas Bicycles	Motorizados Motorized	Equestres Equestrian	Equipamento Equipment	Pedestrianistas Walkers	Ondulado Wavy trail



Parque Natural de Santa Maria
Santa Maria Natural Park

O percurso atravessa zonas protegidas. É responsabilidade de todos nós contribuímos para a sua proteção, bem como assegurar a sua biodiversidade através da conservação destes habitats naturais.

The trail goes through protected areas. It's our responsibility to contribute to its protection, as well as to assure its biodiversity through the conservation of these natural habitats.

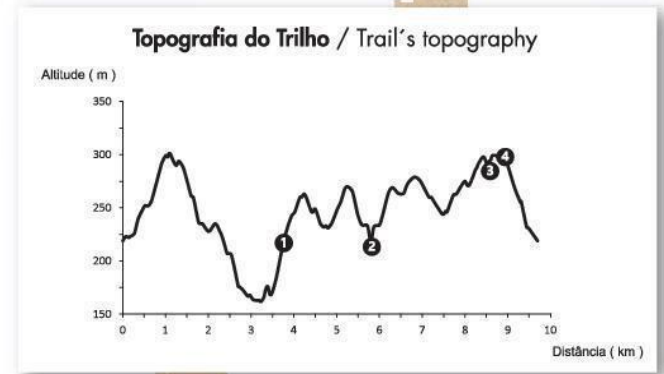


PRC
03
SMA

Percurso Pedestre / Walking Trail
Entre a Serra e o Mar
 Ilha de Santa Maria / Santa Maria island



Duração Duration	02h30	Extensão Length	9,7 km
Fácil Easy	Médio Medium	Difícil Hard	
Caminho certo Right way	Caminho errado Wrong way	Vire à direita Turn right	Vire à esquerda Turn left



- Bicicletas
Bicycles
- Motorizados
Motorized
- Equestres
Equestrian
- Pedestrianistas
Walkers
- Equipamento
Equipment
- Ondulado
Wavy trail



**PR
04
SMA**

Percurso Pedestre / Walking Trail

Santo Espírito - Maia

Ilha de Santa Maria / Santa Maria island



Duração Duration **02h00** **Extensão** Length **4,1 km**

Fácil Easy **Médio** Medium **Difícil** Hard

Caminho certo Right way **Caminho errado** Wrong way **Vire à direita** Turn right **Vire à esquerda** Turn left



- Bicicletas**
Bicycles
- Motorizados**
Motorized
- Equestres**
Equestrian
- Vertigens**
Vertigo
- Equipamento**
Equipment
- Pedestrianistas**
Walkers
- Inclinado**
Inclined



PR
05
SMA

Percurso Pedestre / Walking Trail

Costa Sul

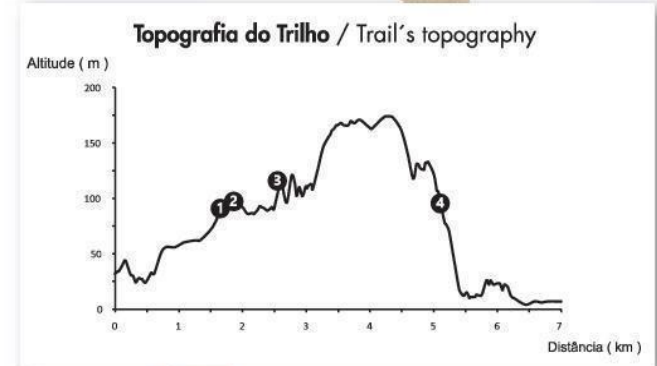
Ilha de Santa Maria / Santa Maria island



Duração Duration **03h00** **Extensão** Length **7 km**

Fácil Easy **Médio** Medium **Difícil** Hard

Caminho certo Right way **Caminho errado** Wrong way **Vire à direita** Turn right **Vire à esquerda** Turn left



Bicicletas Bicycles **Motorizados** Motorized **Equestres** Equestrian **Vertigens** Vertigo **Pedestrianistas** Walkers **Equipamento** Equipment **Ondulado** Wavy trail



Barreiro da Faneca
Barreiro da Faneca



Parque Natural de Santa Maria
Santa Maria Natural Park



Área Protegida para a Gestão de Habitats ou Espécies
Habitat/Species Management Area



Área Protegida de Gestão de Recursos
Protected Area with Sustainable Use of Natural Resources



Monumento Natural
Natural Monument



Reserva Natural
Natural Reserve



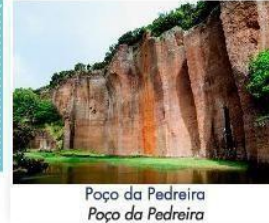
Paisagem Protegida
Protected Landscape

GR
01
SMA

Percorso Pedestre / Walking Trail

Grande Rota de
Santa Maria

Ilha de Santa Maria / Santa Maria island



Poço da Pedreira
Poço da Pedreira



Ribeira do Maloós
Ribeira do Maloós stream



Cascata do Aveiro
Waterfall cascata do Aveiro

Etapa 1 / Stage 1 Vila do Porto - Cardal	Duração Duration	06h30	Extensão Length	16,5 km
Etapa 2 / Stage 2 Cardal - Norte	Duração Duration	07h30	Extensão Length	21,5 km
Etapa 3 / Stage 3 Norte - Bananeiras	Duração Duration	06h30	Extensão Length	16,5 km
Etapa 4 / Stage 4 Bananeiras - Vila do Porto	Duração Duration	08h00	Extensão Length	23,5 km

	Fácil Easy		Médio Medium		Difícil Hard
--	---------------	--	-----------------	--	-----------------

	Caminho certo Right way		Caminho errado Wrong way		Vire à direita Turn right		Vire à esquerda Turn left
--	----------------------------	--	-----------------------------	--	------------------------------	--	------------------------------



Parque Natural de Santa Maria
Santa Maria Natural Park

O percurso atravessa zonas protegidas. É responsabilidade de todos nós contribuímos para a sua proteção, bem como assegurar a sua biodiversidade através da conservação destes habitats naturais.
The trail goes through protected areas. It's our responsibility to contribute to its protection, as well as to assure its biodiversity through the conservation of these natural habitats.



3 Half-days in Santa Maria

1st Day

- ✓ Centro Histórico de Vila do Porto;
- ✓ Pedreira do Campo;
- ✓ Grutas do Figueiral;
- ✓ Praia Formosa.



2nd Day

- ✓ Barreiro da Piedade;
- ✓ Ribeira do Maloás;
- ✓ Santo Espírito;
- ✓ Maia.



3th Day

- ✓ Pico Alto;
- ✓ São Lourenço;
- ✓ Poço da Pedreira;
- ✓ Norte;
- ✓ Anjos.



- ✓ Vila do Porto – Historic Zone;
- ✓ Pedreira do Campo;
- ✓ Praia Formosa;
- ✓ Pico Alto;
- ✓ Barreiro da Piedada;
- ✓ Santo Espírito Museum;
- ✓ Church of Our Lady of Purification;
- ✓ Break for Lunch;
- ✓ Maia – Whaling Lookout;
- ✓ São Lourenço;
- ✓ Poço da Pedreira;
- ✓ Santa Bárbara;
- ✓ Norte;
- ✓ Church of Our Lady of Fátima;
- ✓ Barreiro da Faneca;
- ✓ Anjos.



Morning

- ✓ Vila do Porto – Historic Zone;
- ✓ Praia Formosa;
- ✓ Pico Alto;
- ✓ Barreiro da Piedade;
- ✓ Maia;
- ✓ Santo Espírito Museum;
- ✓ Church of Our Lady of Purification;
- ✓ Poço da Pedreira.

Afternoon

- ✓ Vila do Porto – Zona Histórica;
- ✓ Praia Formosa;
- ✓ Pico Alto;
- ✓ Barreiro da Piedade;
- ✓ Maia;
- ✓ Santo Espírito Museum;
- ✓ Church of Our Lady of Purification;
- ✓ Maia;
- ✓ Miradouro São Lourenço.



*Van Tours:

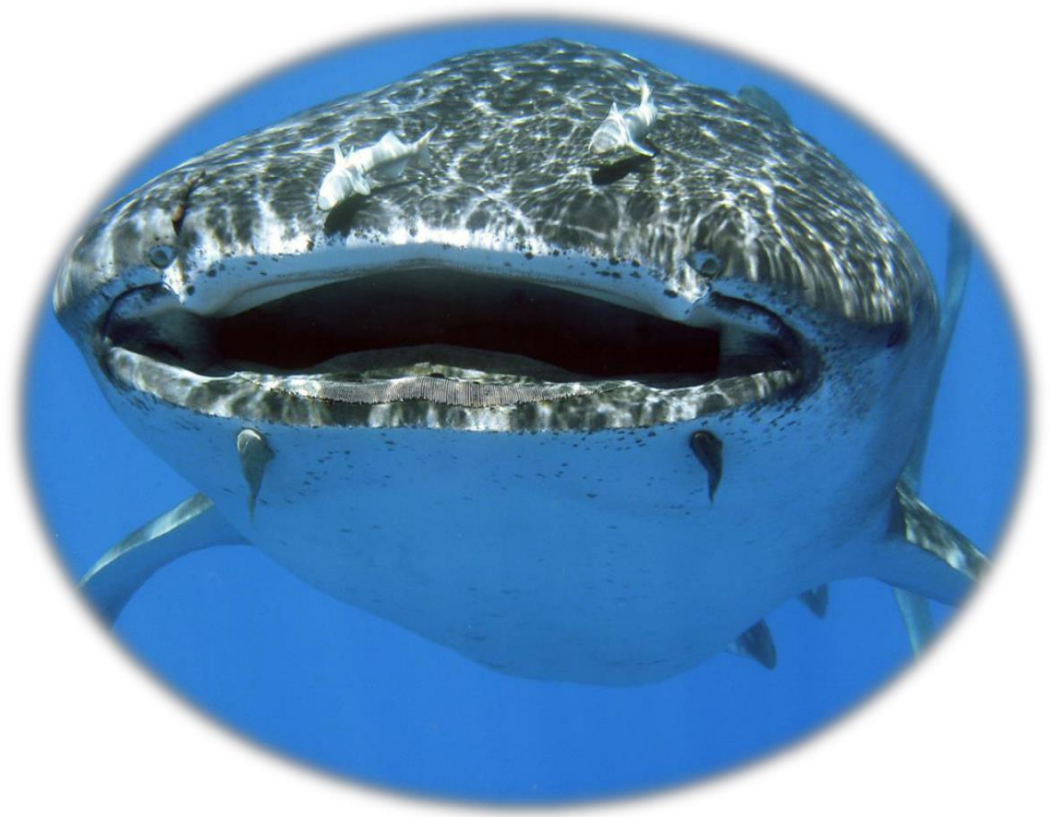
It is always possible to modify the itinerary or to merge it with radical activities.

- Estradas Principais / Main Roads
Routes Principales / Hauptstrassen
- Estradas Secundárias / Secondary Roads
Routes Secondaires / Nebenstrassen
- Caminhos Secundários / Secondary Ways
Chemins Secondaires / Nebenwege



Escala 1/65 000





Marina de Vila do Porto

9580-541 Vila do Porto, Santa Maria- Açores

M: +351 918 685 447 / +351 917 287 286

Tel.: +351 296 882 907 *Fax: +351 296 882 906

e-mail: info@mantamaria.com / Cordenadas de GPS: GPS:36°57'4''N /25°8'58''O

www.mantamaria.com

www.facebook.com/MantamariaDiveCenter

Licencia MT 10/2010

Licencia AT 14/2015/RAA (15 Junho)

