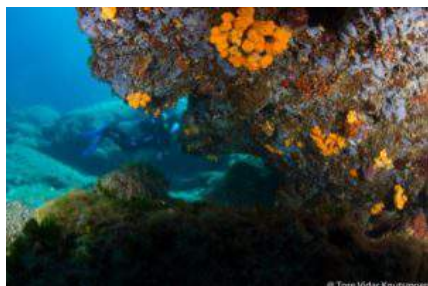


HVARIN ALUEEN SUKELLUSKOHTEET:

VODNJAK



A SMALL ISLAND ON THE WEST END OF OUR ARCHIPELAGO, THIS SITE CONTAINS SEVERAL DIVE POINTS, THE BEST KNOWN AS 'CAMPANILE' OR 'TURM' (GIVEN ITS CHURCH-LIKE TOWER ARISING FROM THE DEPTHS). ALSO SITUATED HERE IS A 5M LONG TUNNEL AT 35M, RED GORGONS FROM 15-40M OF DEPTH AND THE ADRENALINE ASSOCIATED BY 'DIVING IN BLUE' MAKES THIS A FANTASTIC SITE TO VIEW AND EXPLORE.

STAMBEDAR



THE UPPER PART OF THIS REEF (A 20M DEEP PLATEAU) WILL HAVE YOU THINKING THIS IS SIMPLY ANOTHER GREAT SITE OF THE ADRIATIC SEA, HOWEVER LOSE YOURSELF IN THE BEAUTY OF A 50M DEEP WALL, A FOREST OF RED GORGONS AND VARIOUS KINDS OF RED ALGAE, SPONGES AND FISH.

VELA GARSKA



FANTASTIC FROM BEGINNERS TO THE MORE EXPERIENCED, VELA GARSKA HAS A MAXIMUM DEPTH OF 30M BUT SPORTS A 70M LONG WALL, COLORS AND SEA-LIFE WITH THE BEST PART BEING A 20M LONG CAVE ONLY 5M UNDER THE SURFACE.

PAULINA WRECK



AN ENGLISH MERCHANT BOAT SUNKEN SOME 150 YEARS AGO IN A SMALL LAGOON WHICH GIVES SHELTER TO TINY SEA-CREATURES, JOHN DORY AND EVEN THE OCCASIONAL CONGER EEL. A SANDY SEABED SLOPES SLOWLY TO A 30M DEPTH, A SUITABLE AND ACCESSIBLE GRAVE FOR THIS OLD WOODEN BOAT, NOW COVERED BY YELLOW SPONGES.

POSEIDON PILLAR



THIS ROCK RISES JUST OUT OF THE WATER AND IS HOME TO A BEAUTIFUL CHIMNEY STARTING AT 30M AND EXITING AT 11M. THERE ARE CRACKS AND HOLES IN THE CEILING ILLUMINATED BY ERIENCE AS YOU TRAVEL THROUGH. HOME TO SCORPION FISH, MSUNLIGHT, CREATING A SHADOWY YET BREATHTAKING EXPORAY EELS, THE OCCASIONAL LOBSTER AND USUALLY GUARDED BY A CONGER EEL AND FORKBEARD, THIS SITE MAKES FOR A FANTASTIC DIVE.

ROBERT'S WALL



A SUDDENLY DISCOVERED WALL OF 1 KM LONG. THE WALL CHARACTERIZED BY SMALL CAVES, DROP-OFFS, CREVICES, ROCKS, WHICH ENDS IN A SHARP PEAK SEPARATING THE DEEP FROM THE SHALLOW WATER. LOBSTERS, EELS ARE FREQUENTLY SEEN HERE. CURRENTS ARE OFTEN MAKE YOUR DIVE RUNNING LIKE A MOVIE. WE JUST FOUND THIS DIVE SPOT, COME AND MAKE THE UNDERWATER PHOTOS WITH US!

ANCHOR WALL



ANOTHER DIVE FOR DROP-OFFS LOVERS. ON THE FIRST PART OF THE WALL, ON A DEPTH OF 30-35 M YOU'LL SEE LOBSTERS, MORAY EEL, SLEEPING SPOTTED DOGFISH AND OFTEN A SCHOOLS OF JACKS OR SEABREAMS PASSING BY. ASCENDING TOWARDS THE END OF THE WALL, ET A DEPTH OF 18M YOU'LL ENCOUNTER A BIG ADMIRAL ANCHOR HANGING ON THE VERY EDGE OF THE CLIFF.

BABA REEF



BABA IS THE LIGHTHOUSE ON 20 MIN BOAT DRIVE DISTANCE. THE BOTTOM DESCEND SLOWLY FROM 5 – 20 M, THERE THE BEAUTIFUL WALL BEGINS AND GOES UP TO 30 M, ON SOME PLACES EVEN 40. THE WALL IS FULL OF YELLOW GORGONS, ORANGE AND YELLOW SPONGES. YOU'LL SEE SCORPION FISH, MORAY EEL, FORKBEARD AND LOBSTERS. BACK TO SHALLOW WHERE YOU CAN SEARCH FOR OCTOPUS OR IF YOU ARE LUCKY... EVEN A YELLOW HYPOCAMPUS